



شركة الاستثمار الوطنية
NATIONAL INVESTMENTS COMPANY

Bursa Kuwait – Daily Market Report MENA Securities – Research & Studies Dep.

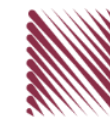
31st October 2022



www.nic.com.kw

DAILY MARKET COVERAGE REPORT

NIC MENA SECURITIES - RESEARCH AND STUDIES DEP



Kuwait Market Watch

Index	Close	DTD Chg Net	DTD (%)	YTD (%)	52W High	52W Low	MKT CAP Bn (KD)	PBV (X)	PE (X)	Monday, October 31, 2022	DY (%)
All Share Index	7,318.41	35.53	0.49%	3.91%	8,472.15	6,788.83	43.39	2.00	31.01		3.99
Premier Index	8,190.94	43.43	0.53%	7.22%	9,437.37	7,343.90	34.21	2.23	32.08		4.41
Main Index	5,489.64	16.60	0.30%	-6.74%	6,600.62	5,190.37	9.18	1.18	27.00		2.39
NIC 50 Index	9,179.67	48.61	0.53%	7.71%	10,553.82	8,195.69	33.51	2.23	32.08		4.41

Index	Value Mn(KD)	Volume (Mn share)
All Share Index	52.16	150.36
Premier Index	45.45	91.39
Main Index	6.71	58.98
NIC 50 Index	51.87	133.47

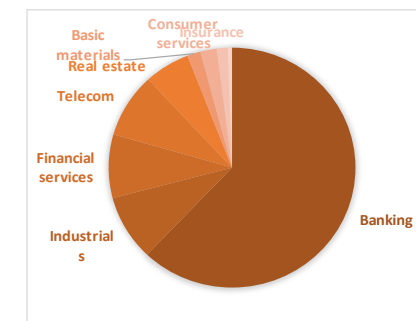
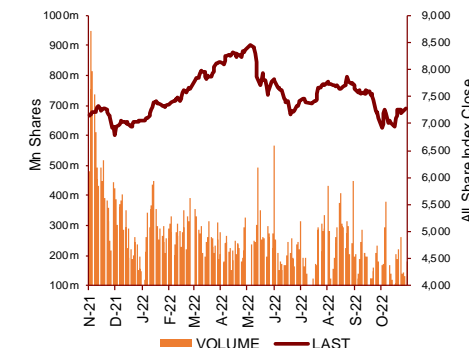
Today's Top 5 Gainer %	Close KD	Value KD	DTD (%)
Al Manar Financing and Leasing	0.061	26,883	10.00%
Metal and Recycling	0.090	3,425	10.00%
Tamdeen Real Estate	0.370	12,499	8.82%
Kuwait Business Town Real Esta	0.059	164,267	8.52%
Al Massaleh Real Estate	0.035	1,376	6.38%

Today's Top 5 by Value	Close KD	Trade Val Mn(KD)	DTD (%)
National Bank of Kuwait	1.078	12.55	1.32%
Kuwait Finance House	0.810	12.17	0.37%
Integrated Holding	0.326	3.59	1.56%
Agility Public Warehousing	0.784	3.26	-0.51%
Alafco Aviation Lease and Fina	0.168	2.50	1.20%

Market Breadth	UP	Down	No Chg
All Share Index	56	48	49
Premier Index	16	7	2
Main Index	40	41	47
NIC 50 Index	24	21	5

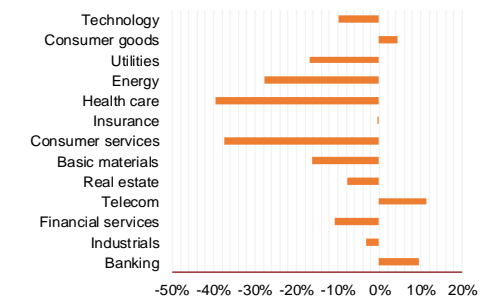
Today's Top 5 Loser %	Close KD	Value KD	DTD (%)
Kuwait Remal Real Estate	0.008	14,717	-8.05%
Warba Capital Holding	0.085	2,581	-5.01%
Ektitab Holding	0.011	19,674	-4.46%
Munshaat Real Estate Projct	0.060	1,947	-4.31%
Kuwait Hotels	0.163	7	-4.12%

Top 5 by Volume	Close KD	Trade Vol Mn(Shrs)	DTD (%)
Kuwait Finance House	0.810	15.09	0.37%
Alafco Aviation Lease and F	0.168	14.78	1.20%
National Bank of Kuwait	1.078	11.70	1.32%
Integrated Holding	0.326	11.06	1.56%
Kuwait Real Estate	0.110	7.12	0.00%



Sector	Close	DTD Chg Net	DTD (%)	YTD (%)	52W High	52W Low	MKT CAP Bn (KD)	PBV (X)	PE (X)	DY (%)
Banking	1,791.90	11.800	0.66%	9.7%	1,992.2	1,557.8	26.585	1.64	24.74	1.86
Industrials	1,105.31	0.690	0.06%	-3.2%	1,443.6	976.3	3.774	1.00	19.67	3.93
Financial services	1,275.72	6.890	0.54%	-10.9%	1,678.3	1,190.4	3.670	1.02	30.42	2.92
Telecom	1,211.98	-1.560	-0.13%	11.4%	1,514.7	1,055.9	3.709	1.37	13.68	2.79
Real estate	1,229.31	7.210	0.59%	-7.9%	1,438.0	1,155.8	2.567	0.69	35.02	1.32
Basic materials	856.39	-3.170	-0.37%	-16.1%	1,233.3	800.8	0.746	1.21	8.99	6.21
Consumer services	455.01	-3.080	-0.67%	-37.3%	778.0	447.8	0.925	2.25	27.70	1.73
Insurance	1,525.51	-0.400	-0.03%	-0.5%	1,675.7	1,434.5	0.608	0.82	44.19	5.29
Health care	481.97	0.000	0.00%	-39.5%	821.7	420.4	0.239	15.79	13.03	1.00
Energy	1,020.73	-10.710	-1.04%	-27.8%	1,592.9	975.7	0.207	0.80	20.71	2.37
Utilities	507.89	7.890	1.58%	-16.7%	650.0	494.7	0.212	2.17	14.78	9.47
Consumer goods	1,396.72	0.230	0.02%	4.5%	1,641.0	1,208.7	0.138	0.90	37.09	2.15
Technology	609.64	-6.550	-1.06%	-9.9%	843.9	539.1	0.008	0.74	NM	-
	7,318.41	35.53	0.49%	3.9%	8,472.2	6,788.8	43.39	2.00	31.01	3.99

YTD Sector Performance %



DAILY MARKET COVERAGE REPORT

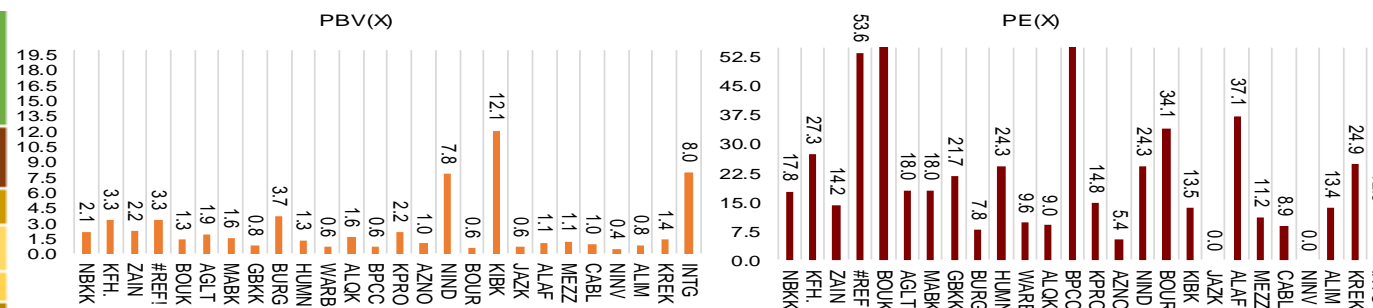
NIC MENA SECURITIES - RESEARCH AND STUDIES DEP



Premier Market

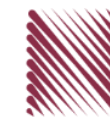
Monday, October 31, 2022

Premier Market	Price			Valuation Multiples			MKT Cap	Price Performance		Trading Indicators		ROE	ROA	52 Week (KD)		MKT Cap
	Close (KD)	Day Δ	Day % Δ	PBV(X)	PE(X)	DY%	Mn KD	MTD(%)	YTD (%)	Value (Mn KD)	(Mn Shrs)	(%)	(%)	High	Low	%
National Bank of Kuwait	1.078	0.014	1.32%	2.07	17.77	2.28	8,141	10%	14%	12.55	11.70	11.7%	1.5%	1.104	0.903	23.80%
Kuwait Finance House	0.810	0.003	0.37%	3.34	27.33	1.35	10,718	-4%	7%	12.17	15.09	12.4%	1.6%	1.039	0.720	31.33%
Mobile Telecommunications	0.599	0.001	0.17%	2.18	14.16	5.52	2,592	3%	1%	2.24	3.75	15.6%	4.3%	0.698	0.564	7.58%
Boubyan Bank	0.824	0.008	0.98%	3.27	53.61	0.55	3,080	8%	16%	0.85	1.03	6.8%	0.8%	0.965	0.681	9.00%
Agility Public Warehousing	0.784	-0.004	-0.51%	1.34	60.22	2.12	1,980	17%	0%	3.26	4.17	2.7%	2.2%	1.062	0.634	5.79%
Mabane Co.	0.872	0.003	0.35%	1.93	18.05	1.52	1,083	1%	17%	0.46	0.52	11.1%	5.5%	0.910	0.717	3.17%
Gulf Bank	0.343	0.003	0.88%	1.56	18.01	1.96	1,098	14%	29%	1.21	3.54	8.9%	0.9%	0.385	0.230	3.21%
Burgan Bank	0.218	0.000	0.00%	0.79	21.67	2.18	716	-2%	-9%	0.60	2.76	3.8%	0.7%	0.307	0.205	2.09%
Human Soft Holding	3.362	-0.002	-0.06%	3.72	7.77	11.89	409	3%	4%	0.35	0.10	48.7%	39.9%	3.704	3.006	1.20%
Warba Bank	0.241	0.001	0.42%	1.32	24.32	0.00	482	9%	-12%	0.48	1.99	5.8%	0.6%	0.298	0.216	1.41%
Qurain Petrochemical Industries	0.252	-0.005	-1.95%	0.62	9.64	7.00	271	-7%	-27%	0.27	1.06	6.4%	5.2%	0.403	0.210	0.79%
Boubyan Petrochemical	0.797	0.005	0.63%	1.63	9.02	7.58	416	-4%	-6%	0.38	0.48	19.1%	10.1%	1.125	0.769	1.21%
Kuwait Projects Company Holding	0.118	-0.001	-0.84%	0.62	302.56	4.20	289	-11%	-17%	0.26	2.17	0.2%	0.1%	0.215	0.112	0.84%
Shamal Az-Zour Al-Oula Power & Water	0.193	0.003	1.58%	2.17	14.78	9.47	212	-1%	-15%	0.12	0.61	19.1%	2.9%	0.247	0.188	0.62%
National Industries Group Holding	0.234	0.001	0.43%	0.98	5.39	4.77	505	2%	-3%	0.96	4.12	15.2%	6.5%	0.314	0.207	1.47%
Boursa Kuwait Securities Co	2.272	0.004	0.18%	7.83	24.30	2.87	456	9%	12%	0.61	0.26	33.9%	22.2%	2.870	1.800	1.33%
Kuwait International Bank	0.189	-0.001	-0.53%	0.60	34.05	2.02	200	-5%	-10%	0.45	2.39	1.7%	0.3%	0.259	0.186	0.59%
Jazeera Airways	1.671	0.009	0.54%	12.08	13.51	2.77	368	1%	30%	0.25	0.15	164.8%	12.1%	2.099	0.981	1.07%
Alafco Aviation Lease and Finance	0.168	0.002	1.20%	0.62	NM	0.00	160	-3%	-23%	2.50	14.78	-15.9%	-3.4%	0.256	0.163	0.47%
Mezzan Holding	0.362	-0.003	-0.82%	1.06	37.09	4.30	113	-3%	-37%	0.42	1.14	2.8%	1.3%	0.616	0.358	0.33%
Gulf Cable and Electrical Industries	1.205	0.040	3.43%	1.12	11.17	5.15	251	13%	38%	0.36	0.30	11.0%	NM	1.850	0.860	0.73%
National Investments	0.239	0.004	1.70%	0.95	8.93	19.15	191	3%	9%	0.20	0.84	10.9%	8.9%	0.475	0.201	0.56%
Alimtiq Investment Group	0.075	0.000	-0.27%	0.44	NM	12.03	76	-1%	-37%	0.00	0.06	-0.9%	-0.4%	0.138	0.069	0.22%
Kuwait Real Estate	0.110	0.000	0.00%	0.80	13.40	2.65	102	9%	-37%	0.79	7.12	6.0%	2.5%	0.187	0.097	0.30%
Integrated Holding	0.326	0.005	1.56%	1.35	24.92	3.12	82	-14%	-12%	3.59	11.06	5.4%	3.4%	0.478	0.321	0.24%
ALI ALGanim	0.795	-0.001	-0.13%	7.97	12.47	0.00	221	1%	nm	0.14	0.18	27.8%	10.9%	0.966	0.750	0.64%
Total	43.43	0.53%	2.23	32.08	4.41	34,210	2.9%	7.2%	45.45	91.20	100%					



DAILY MARKET COVERAGE REPORT

NIC MENA SECURITIES - RESEARCH AND STUDIES DEP



Premier Market Company	Price			Valuation Multiples			MKT Cap Mn KD	Price Performance		ROE (%)	ROA (%)
	Close (KD)	Day Δ	Day % Δ	PBV(X)	PE (X)	DY%		MTD(%)	YTD (%)		
National Bank of Kuwait	1.078	0.014	1.32%	2.07	17.8	2.28	8,141	10.5%	13.5%	11.7%	1.5%
Kuwait Finance House	0.810	0.003	0.37%	3.34	27.3	1.35	10,718	-3.7%	7.1%	12.4%	1.6%
Mobile Telecommunications	0.599	0.001	0.17%	2.18	14.2	5.52	2,592	2.6%	0.7%	15.6%	4.3%
Boubyan Bank	0.824	0.008	0.98%	3.27	53.6	0.55	3,080	7.7%	15.7%	6.8%	0.8%
Agility Public Warehousing	0.784	-0.004	-0.51%	1.34	60.2	2.12	1,980	17.4%	-0.4%	2.7%	2.2%
Mabane Co.	0.872	0.003	0.35%	1.93	18.0	1.52	1,083	1.0%	16.6%	11.1%	5.5%
Gulf Bank	0.343	0.003	0.88%	1.56	18.0	1.96	1,098	14.3%	29.1%	8.9%	0.9%
Burgan Bank	0.218	0.000	0.00%	0.79	21.7	2.18	716	-1.8%	-8.8%	3.8%	0.7%
Human Soft Holding	3.362	-0.002	-0.06%	3.72	7.8	11.89	409	2.7%	4.3%	48.7%	39.9%
Warba Bank	0.241	0.001	0.42%	1.32	24.3	0.00	482	9.0%	-12.0%	5.8%	0.6%
Qurain Petrochemical Industries	0.252	-0.005	-1.95%	0.62	9.6	7.00	271	-7.0%	-27.4%	6.4%	5.2%
Boubyan Petrochemical	0.797	0.005	0.63%	1.63	9.0	7.58	416	-4.0%	-6.5%	19.1%	10.1%
Kuwait Projects Company Holding	0.118	-0.001	-0.84%	0.62	302.6	4.20	289	-11.3%	-16.9%	0.2%	0.1%
Shamal Az-Zour Al-Oula Power & Water	0.193	0.003	1.58%	2.17	14.8	9.47	212	-1.0%	-15.4%	19.1%	2.9%
National Industries Group Holding	0.234	0.001	0.43%	0.98	5.4	4.77	505	2.2%	-2.9%	15.2%	6.5%
Boursa Kuwait Securities Co	2.272	0.004	0.18%	7.83	24.3	2.87	456	9.3%	12.5%	33.9%	22.2%
Kuwait International Bank	0.189	-0.001	-0.53%	0.60	34.1	2.02	200	-4.5%	-9.8%	1.7%	0.3%
Jazeera Airways	1.671	0.009	0.54%	12.08	13.5	2.77	368	1.0%	29.5%	164.8%	12.1%
Alafco Aviation Lease and Finance	0.168	0.002	1.20%	0.62	NM	0.00	160	-3.4%	-22.9%	-15.9%	-3.4%
Mezzan Holding	0.362	-0.003	-0.82%	1.06	37.1	4.30	113	-3.2%	-37.3%	2.8%	1.3%
Gulf Cable and Electrical Industries	1.205	0.040	3.43%	1.12	11.2	5.15	251	12.6%	38.3%	11.0%	9.0%
National Investments	0.239	0.004	1.70%	0.95	8.9	19.15	191	3.5%	9.1%	10.9%	8.9%
Alimtiq Investment Group	0.075	0.000	-0.27%	0.44	NM	12.03	76	-1.2%	-36.8%	-0.9%	-0.4%
Kuwait Real Estate	0.110	0.000	0.00%	0.80	13.4	2.65	102	8.9%	-36.7%	6.0%	2.5%
Integrated Holding	0.326	0.005	1.56%	1.35	24.9	3.12	82	-14.2%	-11.9%	5.4%	3.4%
ALI ALGanim	0.795	-0.001	-0.13%	3.67	12.5	0.00	221	1.3%	nm	27.8%	10.9%
Total	43.43	0.53%	2.23	32.08	4.41	33,989	2.9%	7.2%			

Discription	Close (KD)	Day Δ	Day % Δ	50 Day	200 Day	14 Day	Mn KD	MTD(%)	YTD (%)	High	Low
Premier Index	8,191	43.43	0.53%	8,265	8,445	70	33,989	2.9%	7.1%	9,437	7,344

Top 5 Performrs (Today's Price Change)

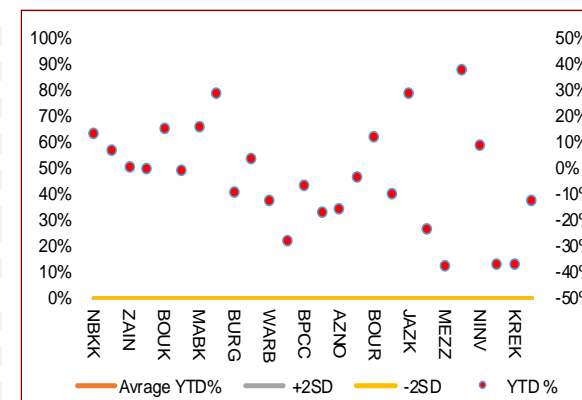
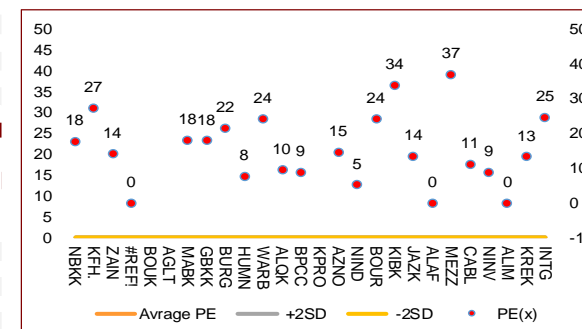
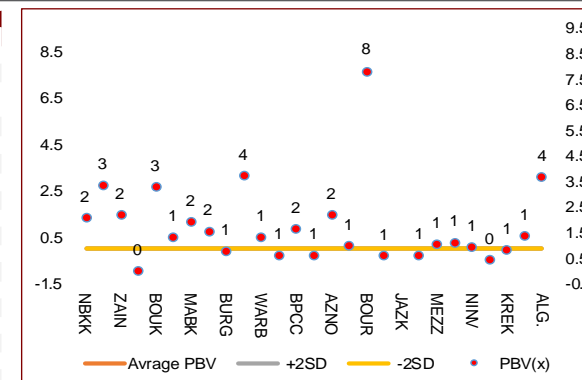
Gulf Cable and Electrical Industries	1.205	0.040	3.43%	1.256	1.330	69	251	12.6%	38.3%	1.850	0.860
National Investments	0.239	0.004	1.70%	0.259	0.314	75	191	3.5%	9.1%	0.475	0.201
Shamal Az-Zour Al-Oula Power & Water	0.193	0.003	1.58%	0.197	0.211	55	212	-1.0%	-15.4%	0.247	0.188
Integrated Holding	0.326	0.005	1.56%	0.377	0.399	23	82	-14.2%	-11.9%	0.478	0.321
National Bank of Kuwait	1.078	0.014	1.32%	1.034	1.036	78	8,141	10.5%	13.5%	1.104	0.903

Middel Performrs (Today's Price Change)

Alafco Aviation Lease and Finance	0.168	0.002	1.20%	0.183	0.203	44	160	-3.4%	-22.9%	0.256	0.163
Boubyan Bank	0.824	0.008	0.98%	0.813	0.807	64	3,080	7.7%	15.7%	0.965	0.681
Gulf Bank	0.343	0.003	0.88%	0.332	0.321	89	1,098	14.3%	29.1%	0.385	0.230
Boubyan Petrochemical	0.797	0.005	0.63%	0.858	0.937	48	416	-4.0%	-6.5%	1.125	0.769
National Industries Group Holding	0.234	0.001	0.43%	0.249	0.259	64	505	2.2%	-2.9%	0.314	0.207
Warba Bank	0.241	0.001	0.42%	0.238	0.260	91	482	9.0%	-12.0%	0.298	0.216
Kuwait Finance House	0.810	0.003	0.37%	0.853	0.874	61	10,718	-3.7%	7.1%	1.039	0.720
Mabane Co.	0.872	0.003	0.35%	0.853	0.815	59	1,083	1.0%	16.6%	0.910	0.717
Boursa Kuwait Securities Co	2.272	0.004	0.18%	2.249	2.370	73	456	9.3%	12.5%	2.870	1.800
Mobile Telecommunications	0.599	0.001	0.17%	0.100	0.100	59	2,592	2.6%	0.7%	1.210	0.996
Ahli United Bank BSC	#N/A	#N/A	#N/A	0.305	0.287	50	#N/A	#N/A	#N/A	0.336	0.240
Kuwait Real Estate	0.110	0.000	0.00%	0.113	0.145	71	102	8.9%	-36.7%	0.187	0.097
Human Soft Holding	3.362	-0.002	-0.06%	3.345	3.316	60	409	2.7%	4.3%	3.704	3.006
Alimtiq Investment Group	0.075	0.000	-0.27%	0.083	0.107	48	76	-1.2%	-36.8%	0.138	0.069

Bottom 5 Performrs (Today's Price Change)

Agility Public Warehousing	0.784	-0.004	-0.51%	0.762	0.855	80	1,980	17.4%	-0.4%	1.062	0.634
Kuwait International Bank	0.189	-0.001	-0.53%	0.204	0.219	29	200	-4.5%	-9.8%	0.259	0.186
Mezzan Holding	0.362	-0.003	-0.82%	0.392	0.491	41	113	-3.2%	-37.3%	0.616	0.358
Kuwait Projects Company Holding	0.118	-0.001	-0.84%	0.138	0.162	50	289	-11.3%	-16.9%	0.215	0.112
Qurain Petrochemical Industries	0.252	-0.005	-1.95%	0.284	0.342	47	271	-7.0%	-27.4%	0.403	0.210



DAILY MARKET COVERAGE REPORT

NIC MENA SECURITIES - RESEARCH AND STUDIES DEP



Banking Sector		Price			Valuation Multiples			MKT Cap	Price Performance		Trading Indicators		ROE	ROA	52 Week (KD)		MKT Cap
Company	Close (KD)	Day Δ	Day % Δ	PBV(X)	PE(X)	DY%	Mn KD	MTD(%)	YTD (%)	Value (Mn KD)	(Mn Shrs)	(%)	(%)	High	Low	%	
National Bank of Kuwait	1.078	0.014	1.32%	2.07	17.77	2.28	8,141	10.5%	13.5%	12.55	11.70	11.7%	1.5%	1.104	0.903	18.76%	
Kuwait Finance House	0.810	0.003	0.37%	3.34	27.33	1.35	10,718	-3.7%	7.1%	12.17	15.09	12.4%	1.6%	1.039	0.720	24.70%	
Boubyan Bank	0.824	0.008	0.98%	3.27	53.61	0.55	3,080	7.7%	15.7%	0.85	1.03	6.8%	0.8%	0.965	0.681	7.10%	
Commercial Bank of Kuwait	0.486	0.000	0.00%	1.15	12.11	4.12	963	0.2%	-3.0%	0.00	0.00	9.9%	1.9%	0.549	0.456	2.22%	
Gulf Bank	0.343	0.003	0.88%	1.56	18.01	1.96	1,098	14.3%	29.1%	1.21	3.54	8.9%	0.9%	0.385	0.230	2.53%	
Burgan Bank	0.218	0.000	0.00%	0.79	21.67	2.18	716	-1.8%	-8.8%	0.60	2.76	3.8%	0.7%	0.307	0.205	1.65%	
Ahli United Bank	0.267	0.002	0.75%	0.91	23.54	1.80	601	2.3%	-9.3%	0.04	0.13	3.8%	0.8%	0.324	0.250	1.39%	
Warba Bank	0.241	0.001	0.42%	1.32	24.32	0.00	482	9.0%	-12.0%	0.48	1.99	5.8%	0.6%	0.298	0.216	1.11%	
Al Ahli Bank of Kuwait	0.331	0.004	1.22%	0.98	21.75	1.46	586	12.2%	36.8%	0.94	2.86	4.5%	0.6%	0.355	0.216	1.35%	
Kuwait International Bank	0.189	-0.001	-0.53%	0.60	34.05	2.02	200	-4.5%	-9.8%	0.45	2.39	1.7%	0.3%	0.259	0.186	0.46%	
Total Banking Sector - 10 Companies							26,585			29.27	41.50					61.27%	
Basic Materials		Price			Valuation Multiples			MKT Cap	Price Performance		Trading Indicators		ROE	ROA	52 Week (KD)		MKT Cap
Company	Close (KD)	Day Δ	Day % Δ	PBV(X)	PE(X)	DY%	Mn KD	MTD(%)	YTD (%)	Value (Mn KD)	(Mn Shrs)	(%)	(%)	High	Low	%	
Qurain Petrochemical Industries	0.252	-0.005	-1.95%	0.62	9.64	7.00	271	-7.01%	-27.38%	0.27	1.06	6.4%	5.2%	0.403	0.210	0.62%	
Boubyan Petrochemical	0.797	0.005	0.63%	1.63	9.02	7.58	416	-3.98%	-6.46%	0.38	0.48	19.1%	10.1%	1.125	0.769	0.96%	
Al Kout Industrial Projects	0.390	0.000	0.00%	1.40	4.93	10.26	39	-3.94%	-21.37%	0.00	0.00	30.5%	20.1%	0.545	0.390	0.09%	
Kuwait Foundry	0.290	0.000	0.00%	1.20	12.36	0.00	21	0.00%	-21.41%	0.00	0.00	10.7%	10.3%	0.424	0.260	0.05%	
Total Basic Materials - 4 Companies							746			0.65	1.54					1.72%	
Consumer Goods		Price			Valuation Multiples			MKT Cap	Price Performance		Trading Indicators		ROE	ROA	52 Week (KD)		MKT Cap
Company	Close (KD)	Day Δ	Day % Δ	PBV(X)	PE(X)	DY%	Mn KD	MTD(%)	YTD (%)	Value (Mn KD)	(Mn Shrs)	(%)	(%)	High	Low	%	
Mezzan Holding	0.362	-0.003	-0.82%	1.06	37.09	4.30	113	-3.2%	-37.3%	0.42	1.14	2.8%	1.3%	0.616	0.358	0.26%	
Livestock Transport and Trading	0.120	0.000	0.00%	0.74	NM	0.00	25	0.0%	-34.1%	0.00	0.01	-14.5%	-8.2%	0.196	0.112	0.06%	
Total Consumer Goods - 2 Companies							138			0.42	1.15					0.32%	
Consumer Services		Price			Valuation Multiples			MKT Cap	Price Performance		Trading Indicators		ROE	ROA	52 Week (KD)		MKT Cap
Company	Close (KD)	Day Δ	Day % Δ	PBV(X)	PE(X)	DY%	Mn KD	MTD(%)	YTD (%)	Value (Mn KD)	(Mn Shrs)	(%)	(%)	High	Low	%	
Jazeera Airways	1.671	0.009	0.54%	12.08	13.51	2.77	368	1.0%	29.5%	0.25	0.15	164.8%	12.1%	2.099	0.981	0.85%	
Kuwait National Cinema	0.908	0.000	0.00%	1.11	8.84	3.30	84	2.0%	2.9%	0.00	0.00	13.3%	6.1%	0.933	0.850	0.19%	
Oula Fuel Marketing	0.145	-0.002	-1.36%	0.90	15.64	3.40	59	0.0%	-7.1%	0.01	0.04	5.6%	2.9%	0.178	0.140	0.14%	
Al Soor Fuel Marketing	0.149	0.000	0.00%	0.88	19.01	3.36	60	-0.7%	-3.9%	0.00	0.03	4.8%	3.6%	0.175	0.142	0.14%	
Sultan Center Food Products	0.111	-0.001	-0.89%	0.64	0.89	0.00	31	-3.5%	-47.1%	0.02	0.20	74.2%	12.2%	0.269	0.103	0.07%	
Jiyad Holding	0.022	0.000	-1.35%	0.25	NM	0.00	4	-18.0%	-72.9%	0.02	0.83	-16.2%	-10.9%	0.099	0.015	0.01%	
IFA Hotels and Resorts	0.027	0.000	0.00%	3.56	180.00	0.00	17	-2.5%	-49.5%	0.01	0.44	2.0%	0.4%	0.073	0.025	0.04%	
Kuwait Resorts	0.077	0.000	-0.52%	0.50	10.77	3.82	15	-1.4%	-20.7%	0.02	0.33	4.8%	4.2%	0.110	0.067	0.03%	
Future Kid Entertainment and Real Estate	0.116	0.002	1.75%	1.00	10.15	0.00	13	6.4%	47.4%	0.01	0.05	10.4%	4.7%	0.130	0.074	0.03%	
Al Eid Food	0.239	-0.001	-0.42%	1.88	14.53	2.85	40	8.1%	3.6%	0.17	0.69	13.5%	10.1%	0.304	0.207	0.09%	
Kuwait Hotels	0.163	-0.007	-4.12%	2.04	18.87	2.94	9	-11.4%	132.9%	0.00	0.00	11.1%	7.4%	0.201	0.070	0.02%	
Palms Agro Production	0.078	0.000	0.00%	0.79	NM	0.00	4	1.8%	14.4%	0.00	0.00	-13.8%	-10.9%	0.083	0.043	0.01%	
ALI ALGanim	0.795	-0.001	-0.13%	3.67	12.47	0.00	221	1.3%	nm	0.14	0.18	27.8%	10.9%	0.966	0.750	0.51%	
Total Consumer Services - 13 Companies							925			0.65	2.95					2.13%	

DAILY MARKET COVERAGE REPORT

NIC MENA SECURITIES - RESEARCH AND STUDIES DEP



Financial Services	Price			Valuation Multiples			MKT Cap	Price Performance		Trading Indicators		ROE	ROA	52 Week (KD)		MKT Cap
	Company	Close (KD)	Day Δ	Day % Δ	PBV(X)	PE(X)	DY%	Mn KD	MTD(%)	YTD (%)	Value (Mn KD)	(Mn Shrs)	(%)	(%)	High	Low
Egypt Kuwait Holding	0.383	0.009	2.41%	2.14	5.78	5.71	432	-0.3%	-9.7%	0.00	0.00	37.1%	17.5%	0.465	0.353	0.99%
Kuwait Projects Company Holding	0.118	-0.001	-0.84%	0.62	302.56	4.20	289	-11.3%	-16.9%	0.26	2.17	0.2%	0.1%	0.215	0.112	0.66%
National Industries Group Holding	0.234	0.001	0.43%	0.98	5.39	4.77	505	2.2%	-2.9%	0.96	4.12	15.2%	6.5%	0.314	0.207	1.16%
Boursa Kuwait Securities Co	2.272	0.004	0.18%	7.83	24.30	2.87	456	9.3%	12.5%	0.61	0.26	33.9%	22.2%	2.870	1.800	1.05%
GFH Financial Group	0.078	-0.001	-1.27%	0.89	9.55	4.60	271	0.3%	-20.8%	0.34	4.30	9.3%	1.2%	0.109	0.073	0.62%
National Investments	0.239	0.004	1.70%	0.95	8.93	19.15	191	3.5%	9.1%	0.20	0.84	10.9%	8.9%	0.475	0.201	0.44%
Tamdeen Investment	0.550	0.010	1.85%	0.64	14.22	1.85	187	15.8%	45.1%	0.01	0.01	4.9%	3.8%	0.550	0.309	0.43%
Alimtiqaz Investment Group	0.075	0.000	-0.27%	0.44	NM	12.03	76	-1.2%	-36.8%	0.00	0.06	-0.9%	-0.4%	0.138	0.069	0.18%
Commercial Facilities	0.176	0.001	0.57%	0.56	8.70	8.57	89	2.3%	-14.6%	0.01	0.07	6.5%	3.6%	0.228	0.165	0.21%
Aayan Leasing and Investment	0.128	-0.001	-0.78%	0.95	12.12	0.00	85	14.3%	-22.7%	0.83	6.48	8.2%	6.0%	0.204	0.104	0.20%
Kuwait Investment	0.132	0.002	1.54%	0.63	7.65	19.23	72	2.3%	-53.0%	0.15	1.13	8.1%	4.6%	0.317	0.113	0.17%
Noor Financial Investment	0.180	0.003	1.69%	1.11	5.03	2.71	92	0.0%	-29.2%	0.01	0.08	22.7%	16.0%	0.319	0.163	0.21%
Arzan Financial Group for Financing and Investmei	0.132	0.001	0.76%	0.88	8.29	1.84	106	9.1%	-15.1%	0.35	2.62	11.3%	8.2%	0.180	0.109	0.24%
Kuwait Financial Centre	0.107	0.001	0.94%	0.52	8.09	8.98	54	-10.8%	-37.9%	0.02	0.17	6.9%	4.0%	0.197	0.101	0.12%
Gulf Investment House	0.399	-0.001	-0.25%	3.80	NM	0.00	162	-2.2%	33.0%	0.00	0.00	-3.0%	-2.0%	0.422	0.217	0.37%
Arabi Group Holdings	0.287	-0.004	-1.37%	1.71	NM	0.00	47	6.7%	-1.4%	0.05	0.18	-29.0%	-4.0%	0.499	0.169	0.11%
Kuwait and Middle East Financial Investment	0.133	0.000	0.00%	1.15	15.48	5.26	29	15.7%	-11.3%	0.01	0.05	7.5%	5.2%	0.175	0.094	0.07%
Privatization Holding	0.037	0.001	1.37%	0.31	NM	0.00	23	2.5%	-32.7%	0.00	0.12	-7.1%	-5.5%	0.070	0.032	0.05%
Asiya Capital Investments	0.045	0.000	0.91%	0.40	2.46	0.00	35	10.7%	-14.4%	0.24	5.41	17.9%	17.6%	0.071	0.037	0.08%
Umm Al Qaiwain General Investment Co	0.094	0.000	0.00%	0.57	4.97	5.32	34	1.1%	7.8%	0.00	0.00	12.0%	10.0%	0.108	0.077	0.08%
Securities House	0.059	0.000	-0.67%	0.60	10.10	0.00	25	3.5%	-40.1%	0.01	0.15	5.8%	5.0%	0.114	0.052	0.06%
Kamco Investment	0.099	0.002	2.06%	0.55	3.91	10.31	34	0.1%	-23.3%	0.01	0.13	14.5%	6.9%	0.167	0.089	0.08%
First Investment	0.075	0.000	0.27%	0.65	106.86	0.00	33	4.5%	-11.2%	0.04	0.51	0.6%	0.7%	0.104	0.068	0.08%
Inovest BSC Public	0.077	0.001	1.58%	0.00	NM	0.00	23	-1.3%	-34.5%	0.00	0.01	2.7%	1.7%	0.189	0.070	0.05%
Coast Investment and Development	0.077	0.000	0.00%	0.76	10.53	6.49	36	-3.1%	-26.7%	0.00	0.01	7.2%	6.8%	0.126	0.066	0.08%
Al Madar Investment	0.098	0.000	0.00%	0.92	57.31	0.00	20	-2.3%	-17.6%	0.00	0.00	1.6%	1.7%	0.125	0.083	0.05%
Bayan Investment	0.035	0.000	0.00%	0.31	NM	0.00	13	0.0%	-28.8%	0.00	0.00	-0.5%	-0.6%	0.060	0.031	0.03%
Al Manar Financing and Leasing	0.061	0.006	10.00%	0.59	19.71	0.00	16	14.6%	-2.9%	0.03	0.46	2.9%	2.3%	0.079	0.049	0.04%
Manazel Holding	0.027	0.000	0.00%	0.59	9.35	0.00	12	-3.9%	-46.7%	0.00	0.12	6.2%	2.0%	0.060	0.025	0.03%
Kuwait Finance and Investment	0.063	0.003	5.00%	0.47	27.39	0.00	19	-1.6%	-27.4%	0.00	0.02	1.7%	1.6%	0.104	0.055	0.04%
National International Holding	0.110	0.004	3.77%	0.63	8.22	4.58	24	1.9%	-25.5%	0.02	0.21	7.6%	5.3%	0.167	0.091	0.06%
Osoul Investment	0.089	-0.003	-3.05%	0.81	NM	11.53	11	22.9%	8.9%	0.00	0.00	-4.4%	-4.0%	0.118	0.062	0.03%
UniCap Investment and Finance	0.056	0.000	0.00%	0.61	65.29	0.00	12	-3.8%	-19.0%	0.00	0.00	1.9%	0.2%	0.087	0.050	0.03%
Amar Finance and Leasing	0.063	0.000	0.00%	0.58	3.42	0.00	12	-1.1%	-3.8%	0.00	0.00	18.6%	17.3%	0.082	0.058	0.03%
Gulf North Africa Holding	0.148	0.000	0.00%	1.72	59.40	0.00	20	9.6%	71.9%	0.18	1.25	3.0%	2.4%	0.141	0.057	0.05%
International Financial Advisors	0.087	-0.003	-3.33%	0.56	34.94	0.00	22	-3.9%	-23.0%	0.05	0.55	1.9%	0.7%	0.129	0.082	0.05%
Credit Rating and Collection	0.016	0.000	0.63%	0.55	NM	0.00	3	-7.0%	-60.2%	0.00	0.00	-0.4%	-0.3%	0.069	0.014	0.01%
Ekttitab Holding	0.011	-0.001	-4.46%	0.35	NM	0.00	3	-2.7%	-49.8%	0.02	1.84	-16.8%	-12.9%	0.024	0.009	0.01%
Kuwait Syrian Holding Co	0.034	0.000	0.00%	0.33	5.48	0.00	6	-8.1%	-20.6%	0.00	0.00	8.7%	6.2%	0.060	0.026	0.01%
Warba Capital Holding	0.085	-0.005	-5.01%	0.95	NM	0.00	9	-13.0%	-0.8%	0.00	0.03	-0.8%	-0.7%	0.120	0.070	0.02%
National Consumer Holding	0.111	-0.001	-0.89%	5.03	NM	0.00	33	-0.9%	-7.4%	0.30	2.70	-8.0%	-7.5%	0.166	0.097	0.08%
Al Deera Holding	0.167	0.004	2.45%	1.12	8.41	0.00	15	0.0%	-16.5%	0.00	0.00	12.5%	6.5%	0.200	0.145	0.04%
AL Safat Investment	0.098	0.003	2.93%	1.25	NM	0.00	28	-12.1%	-19.3%	0.15	1.51	-1.8%	-1.6%	0.270	0.091	0.06%
Gulf Franchising Holding	0.082	0.000	0.00%	1.61	NM	0.00	3	-1.1%	-14.5%	0.00	0.00	-5.7%	-1.6%	0.148	0.063	0.01%
Total Financial Services - 44 Companies							3,668			4.86	37.59					8.45%

DAILY MARKET COVERAGE REPORT

NIC MENA SECURITIES - RESEARCH AND STUDIES DEP

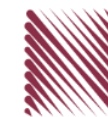


Health Care	Price			Valuation Multiples			MKT Cap	Price Performance		Trading Indicators		ROE	ROA	52 Week (KD)		MKT Cap
	Company	Close (KD)	Day Δ	Day % Δ	PBV(X)	PE(X)		DY%	Mn KD	MTD(%)	YTD (%)			Value (Mn KD)	(Mn Shrs)	
Al-Maidan Clinic for Oral Health Services	0.695	0.000	0.00%	2.76	15.29	0.00	156	9.9%	-49.6%	0.00	0.00	19.4%	12.5%	1.400	0.556	0.36%
Advanced Technology	0.499	0.000	0.00%	1.11	10.78	3.01	75	-4.0%	-3.7%	0.00	0.00	10.7%	2.1%	0.595	0.450	0.17%
Yiaco Medical	0.450	0.000	0.00%	43.51	NM	0.00	8	0.0%	2.7%	0.00	0.00	-161.7%	-4.7%	0.480	0.399	0.02%
Total Health Care - 3 Companies							239			0.00	0.00					0.55%

Industrials	Price			Valuation Multiples			MKT Cap	Price Performance		Trading Indicators		ROE	ROA	52 Week (KD)		MKT Cap
	Company	Close (KD)	Day Δ	Day % Δ	PBV(X)	PE(X)		DY%	Mn KD	MTD(%)	YTD (%)			Value (Mn KD)	(Mn Shrs)	
Agility Public Warehousing	0.784	-0.004	-0.51%	1.34	60.22	2.12	1,980	17.4%	-0.4%	3.26	4.17	2.7%	2.2%	1.062	0.634	4.56%
Human Soft Holding	3.362	-0.002	-0.06%	3.72	7.77	11.89	409	2.7%	4.3%	0.35	0.10	48.7%	39.9%	3.704	3.006	0.94%
Alafco Aviation Lease and Finance	0.168	0.002	1.20%	0.62	NM	0.00	160	-3.4%	-22.9%	2.50	14.78	-15.9%	-3.4%	0.256	0.163	0.37%
Kuwait Cement	0.211	0.000	0.00%	0.77	NM	2.37	150	1.9%	-8.7%	0.01	0.06	-1.1%	-0.7%	0.295	0.194	0.35%
Gulf Cable and Electrical Industries	1.205	0.040	3.43%	1.12	11.17	5.15	251	12.6%	38.3%	0.36	0.30	11.0%	9.0%	1.850	0.860	0.58%
Integrated Holding	0.326	0.005	1.56%	1.35	24.92	3.12	82	-14.2%	-11.9%	3.59	11.06	5.4%	3.4%	0.478	0.321	0.19%
Kuwait Portland Cement	0.835	0.035	4.38%	1.17	17.47	8.75	84	2.6%	-14.8%	0.09	0.12	6.8%	5.3%	1.240	0.751	0.19%
Educational Holding Group	2.450	-0.040	-1.61%	4.16	9.30	21.40	51	-18.3%	-38.8%	0.02	0.01	30.0%	17.2%	5.005	2.367	0.12%
United Projects for Aviation Services	0.204	-0.004	-1.92%	0.75	72.86	0.00	77	-7.7%	-17.7%	0.00	0.00	1.0%	0.6%	0.318	0.182	0.18%
Heavy Engineering Industries and Shipbuilding	0.625	0.000	0.00%	1.68	20.65	3.20	113	-3.0%	22.8%	0.42	0.67	8.2%	3.2%	0.960	0.442	0.26%
National Industries	0.191	0.000	0.00%	0.77	11.14	5.24	67	5.5%	-1.0%	0.00	0.00	6.8%	5.1%	0.260	0.181	0.15%
ACICO Industries	0.091	-0.001	-0.66%	0.41	NM	0.00	30	3.1%	-34.7%	0.05	0.50	-1.9%	-0.5%	0.208	0.076	0.07%
Kuwait Company for Process Plant Construction a	0.307	-0.007	-2.23%	1.23	19.90	7.89	36	2.0%	-35.3%	0.00	0.00	6.1%	3.5%	0.522	0.286	0.08%
Ras Al Khaimah for White Cement and Constructi	0.140	0.000	0.00%	1.17	26.11	5.92	70	-4.8%	11.1%	0.00	0.00	4.6%	3.7%	0.175	0.113	0.16%
Combined Group Contracting	0.410	-0.003	-0.73%	1.52	6.28	6.05	70	2.8%	15.8%	0.07	0.17	26.3%	5.8%	0.500	0.308	0.16%
Kuwait and Gulf Link Transport	0.058	0.001	0.88%	0.34	3.10	0.00	16	1.8%	-15.7%	0.00	0.00	11.6%	2.6%	0.106	0.054	0.04%
Shuaiba Industrial	0.149	0.000	0.00%	0.82	12.40	8.05	15	-8.0%	-33.8%	0.00	0.03	6.6%	5.4%	0.310	0.137	0.03%
National Cleaning	0.038	0.000	0.00%	0.30	NM	0.00	9	10.6%	-34.1%	0.00	0.00	-13.9%	-4.1%	0.080	0.031	0.02%
Fujairah Cement Industries	0.038	0.000	0.00%	0.23	NM	0.00	14	-2.8%	-28.9%	0.00	0.00	-12.7%	-6.3%	0.069	0.028	0.03%
Mubarrad Holding	0.080	0.003	3.23%	0.62	6.77	6.45	13	4.0%	-27.3%	0.00	0.01	9.3%	8.2%	0.130	0.071	0.03%
Specialities Group Holding	0.092	0.003	3.14%	0.49	9.99	7.63	15	9.4%	-26.0%	0.00	0.01	5.0%	3.6%	0.152	0.076	0.03%
Salbookh Trading	0.019	0.000	-1.07%	0.56	NM	0.00	2	-1.6%	-57.4%	0.00	0.02	-51.7%	-28.6%	0.062	0.016	0.00%
Metal and Recycling	0.090	0.008	10.00%	1.17	NM	0.00	8	21.9%	-5.1%	0.00	0.04	-12.0%	-2.0%	0.136	0.060	0.02%
Equipment Holding	0.032	0.000	0.00%	0.51	NM	0.00	3	-5.9%	-41.3%	0.00	0.00	-11.1%	-3.2%	0.079	0.030	0.01%
Jassim Transport & Stevedoring	0.329	0.000	0.00%	1.11	14.35	4.86	49	0.0%	-19.2%	0.01	0.12	8.0%	6.3%	0.410	0.300	0.11%
Total Industrials - 24 Companies							3,774			10.75	32.17					8.70%

DAILY MARKET COVERAGE REPORT

NIC MENA SECURITIES - RESEARCH AND STUDIES DEP



Insurance	Price			Valuation Multiples			MKT Cap	Price Performance		Trading Indicators		ROE	ROA	52 Week (KD)		MKT Cap
	Company	Close (KD)	Day Δ	Day % Δ	PBV(X)	PE(X)		DY%	Mn KD	MTD(%)	YTD (%)			Value (Mn KD)	(Mn Shrs)	
Gulf Insurance Group	0.985	0.000	0.00%	1.14	4.22	10.76	279	-1.0%	-7.9%	0.00	0.00	28.6%	5.5%	1.200	0.890	0.64%
Al Ahleia Insurance	0.509	-0.005	-0.97%	0.85	7.02	6.81	110	6.9%	0.8%	0.00	0.00	12.5%	4.4%	0.612	0.453	0.25%
Kuwait Insurance	0.494	0.005	1.02%	0.74	7.66	6.75	91	9.8%	27.6%	0.03	0.07	10.4%	6.1%	0.497	0.379	0.21%
Kuwait Reinsurance	0.286	0.000	0.00%	1.03	10.10	1.60	68	-3.1%	13.4%	0.00	0.00	10.8%	3.4%	0.373	0.217	0.16%
Bahrain Kuwait Insurance	0.191	0.000	0.00%	1.33	11.98	8.44	29	0.0%	0.0%	0.00	0.00	11.0%	2.1%	0.191	0.191	0.07%
Warba Insurance and Reinsurance	0.126	0.000	0.00%	0.54	8.76	7.94	21	-2.3%	-20.8%	0.00	0.01	6.2%	2.1%	0.165	0.119	0.05%
First Takaful Insurance	0.046	0.000	0.00%	0.60	284.38	0.00	5	-4.2%	-9.0%	0.00	0.00	0.2%	0.1%	0.081	0.034	0.01%
Wethaq Takaful Insurance	0.037	0.000	0.00%	0.33	19.37	0.00	4	3.6%	-27.3%	0.00	0.00	1.7%	1.7%	0.102	0.024	0.01%
Total Insurance - 8 Companies							608			0.04	0.08					1.40%

Energy	Price			Valuation Multipels			MKT Cap	Price Performance		Trading Indicators		ROE	ROA	52 Week (KD)		MKT Cap
	Company	Close (KD)	Day Δ	Day % Δ	PBV(X)	PE(X)		DY%	Mn KD	MTD(%)	YTD (%)			Value (Mn KD)	(Mn Shrs)	
National Petroleum Services	0.697	-0.025	-3.46%	1.76	12.49	4.85	68	-7.1%	-15.0%	0.01	0.01	14.5%	11.6%	0.880	0.625	0.16%
Independent Petroleum Group	0.430	0.000	0.00%	0.79	14.40	6.98	78	-9.1%	-26.9%	0.00	0.00	5.5%	1.0%	0.614	0.368	0.18%
Burgan for Well Drilling Trading and Maintenance	0.115	0.002	1.77%	0.42	9.65	2.41	30	7.0%	-14.0%	0.00	0.02	4.4%	1.4%	0.161	0.094	0.07%
Energy House Holding	0.022	0.000	-0.91%	0.79	NM	0.00	16	13.0%	-65.6%	0.00	0.00	-1.4%	-2.5%	0.086	0.019	0.04%
Gulf Petroleum Investment	0.016	0.000	-1.23%	0.23	NM	0.00	7	-1.2%	-34.7%	0.00	0.00	-4.0%	-2.6%	0.031	0.013	0.02%
Senergy Holding	0.039	0.000	0.00%	0.78	46.31	0.00	8	-2.7%	-20.6%	0.00	0.00	1.7%	1.4%	0.063	0.036	0.02%
Total Energy - 6 Companies							207			0.01	0.03					0.48%

DAILY MARKET COVERAGE REPORT

NIC MENA SECURITIES - RESEARCH AND STUDIES DEP



Real Estate	Price		Valuation Multiples				MKT Cap	Performance		Trading Indicators		ROE	ROA	2 Week (KD)		MKT Cap
Company	Close (KD)	Day Δ	Day % Δ	PBV(X)	PE(X)	DY%	Mn KD	MTD(%)	YTD (%)	Value (Mn KD)	(Mn Shrs)	(%)	(%)	High	Low	%
Mabaneer Co.	0.872	0.003	0.35%	1.93	18.05	1.52	1,083	1.0%	16.6%	0.46	0.52	11.1%	5.5%	0.910	0.717	2.50%
Salhia Real Estate	0.466	0.006	1.30%	1.55	19.91	3.11	240	4.5%	-7.5%	0.46	1.00	7.9%	3.2%	0.578	0.428	0.55%
Commercial Real Estate	0.100	-0.001	-0.70%	0.61	10.23	4.99	175	0.4%	-20.4%	0.50	5.01	6.2%	3.3%	0.140	0.094	0.40%
National Real Estate	0.140	-0.002	-1.41%	0.78	1.27	0.00	260	4.5%	-24.0%	0.18	1.27	64.5%	38.6%	0.212	0.125	0.60%
Tamdeen Real Estate	0.370	0.030	8.82%	0.72	8.52	2.94	149	13.8%	9.1%	0.01	0.04	9.2%	3.9%	0.375	0.296	0.34%
Kuwait Real Estate	0.110	0.000	0.00%	0.80	13.40	2.65	102	8.9%	-36.7%	0.79	7.12	6.0%	2.5%	0.187	0.097	0.23%
United Real Estate	0.072	0.000	-0.14%	0.45	223.44	0.00	77	-8.0%	-5.2%	0.02	0.28	0.2%	-0.1%	0.121	0.064	0.18%
First Dubai for Real Estate Development	0.050	0.000	-0.20%	0.48	33.49	0.00	37	8.7%	-52.5%	0.01	0.25	1.5%	1.2%	0.120	0.044	0.08%
Al Mazaya Holding	0.050	-0.001	-1.00%	0.50	45.00	0.00	31	5.3%	-35.3%	0.10	1.96	1.1%	0.6%	0.089	0.043	0.07%
Ajial Real Estate Entertainment	0.273	0.000	0.00%	0.40	16.84	1.83	53	-0.7%	-10.2%	0.00	0.00	2.4%	2.0%	0.345	0.268	0.12%
Injazzat Real Estate Development	0.077	0.000	0.39%	0.46	6.17	6.49	26	-8.0%	-22.7%	0.00	0.04	7.5%	3.9%	0.114	0.070	0.06%
Munshaat Real Estate Projects	0.060	-0.003	-4.31%	1.80	4.97	0.00	19	-14.3%	-16.1%	0.00	0.03	42.9%	4.5%	0.076	0.052	0.04%
Aayan Real Estate	0.067	0.000	0.00%	0.47	64.42	0.00	28	9.3%	-24.3%	0.14	2.07	0.7%	1.4%	0.105	0.056	0.06%
Al Argan International Real Estate	0.088	-0.003	-2.78%	0.29	32.05	0.00	22	15.1%	-25.2%	0.01	0.08	0.9%	0.3%	0.144	0.073	0.05%
Al-Enmaa Real Estate	0.059	0.001	1.54%	0.65	NM	0.00	27	-12.8%	-20.5%	0.01	0.14	-5.9%	NM	0.091	0.050	0.06%
Arkan Al Kuwait Real Estate	0.124	0.000	0.00%	0.87	12.09	4.84	31	1.6%	0.0%	0.00	0.00	7.4%	2.3%	0.152	0.113	0.07%
Kuwait Business Town Real Estate	0.059	0.005	8.52%	0.73	16.32	0.00	34	17.9%	-28.0%	0.16	2.98	3.8%	2.8%	0.100	0.046	0.08%
Dalqan Real Estate	0.207	-0.001	-0.48%	1.85	191.67	0.00	13	-3.3%	-4.6%	0.04	0.17	1.0%	1.0%	0.274	0.195	0.03%
Sokouk Holding	0.025	0.000	0.00%	0.58	NM	0.00	14	-8.2%	-24.2%	0.00	0.05	-2.9%	-1.7%	0.038	0.020	0.03%
Tijara and Realestate Investment	0.054	-0.001	-2.17%	0.49	8.27	5.43	20	13.7%	-11.6%	0.04	0.66	6.0%	3.2%	0.089	0.044	0.05%
Al-Arabiya Real Estate	0.029	0.000	1.04%	0.35	NM	0.00	15	-3.9%	-30.3%	0.00	0.05	-23.1%	-7.3%	0.052	0.026	0.03%
Aqar Real Estate Investments	0.056	0.000	0.18%	0.46	17.86	5.97	13	-5.1%	-29.1%	0.00	0.01	2.6%	2.1%	0.097	0.052	0.03%
Mashaer Holding	0.055	0.000	0.74%	0.65	NM	0.00	10	3.0%	-21.6%	0.00	0.03	-6.5%	-3.2%	0.086	0.049	0.02%
Dar Al Thuraya Real Estate	0.170	0.000	0.00%	1.47	25.07	0.00	25	0.0%	61.9%	0.00	0.00	6.0%	5.3%	0.172	0.092	0.06%
Osos Holding Group	0.110	0.001	0.92%	0.96	8.76	9.17	12	13.4%	4.8%	0.00	0.01	11.2%	7.1%	0.147	0.094	0.03%
Al Massaleh Real Estate	0.035	0.002	6.38%	0.58	NM	0.00	8	-15.9%	-32.8%	0.00	0.04	-15.4%	-3.2%	0.060	0.030	0.02%
Kuwait Remal Real Estate	0.008	-0.001	-8.05%	1.03	NM	0.00	2	-29.8%	-58.1%	0.01	1.77	-110.3%	-12.4%	0.024	0.008	0.01%
Kuwait Real Estate Holding	0.034	0.000	0.00%	0.64	12.32	0.00	6	-8.1%	-35.6%	0.00	0.00	5.1%	1.7%	0.059	0.032	0.01%
Taameer Real Estate Investment	0.024	0.000	-0.42%	0.38	NM	0.00	5	16.1%	-42.4%	0.00	0.12	-6.5%	-4.9%	0.054	0.018	0.01%
Sanam Real Estate	0.065	0.000	0.00%	0.85	28.93	0.00	8	8.9%	-17.9%	0.00	0.00	2.9%	2.8%	0.100	0.053	0.02%
Mena Real Estate	0.029	-0.001	-3.34%	0.26	NM	0.00	4	-12.2%	-42.2%	0.09	3.09	-6.8%	-5.4%	0.098	0.028	0.01%
Al Masaken International Real Estate Developmen	0.029	0.000	0.00%	0.46	NM	0.00	3	1.1%	-35.1%	0.00	0.00	-1.1%	-0.4%	0.069	0.027	0.01%
Real Estate Trade Centers	0.051	0.000	0.59%	0.29	21.46	0.00	7	-9.8%	-26.7%	0.00	0.03	1.3%	1.1%	0.123	0.043	0.02%
Land United Real Estate	0.068	0.000	0.00%	0.60	NM	0.00	10	0.0%	-27.6%	0.00	0.00	-4.8%	-1.5%	0.129	0.052	0.02%
Total Real Estate - 34 Companies							2,567			3.04	28.82					5.92%

DAILY MARKET COVERAGE REPORT

NIC MENA SECURITIES - RESEARCH AND STUDIES DEP



Technology	Price			Valuation Multiples			MKT Cap	Price Performance		Trading Indicators		ROE	ROA	52 Week (KD)		MKT Cap
	Close (KD)	Day Δ	Day % Δ	PBV(X)	PE(X)	DY%	Mn KD	MTD(%)	YTD (%)	Value (Mn KD)	(Mn Shrs)	(%)	(%)	High	Low	%
Automated Systems	0.084	-0.001	-1.06%	0.74	NM	0.00	8	3.5%	-10.9%	0.01	0.09	-3.4%	-3.0%	0.116	0.074	0.02%
Total Technology - 1 Companies				0.74	NM	0.0%	8			0.01	0.09	-3.40%	-2.96%			0.02%

Telecom	Price			Valuation Multiples			MKT Cap	Price Performance		Trading Indicators		ROE	ROA	52 Week (KD)		MKT Cap
	Close (KD)	Day Δ	Day % Δ	PBV(X)	PE(X)	DY%	Mn KD	MTD(%)	YTD (%)	Value (Mn KD)	(Mn Shrs)	(%)	(%)	High	Low	%
Mobile Telecommunications	0.599	0.001	0.17%	2.18	14.16	5.52	2,592	2.6%	0.7%	2.24	3.75	15.6%	4.3%	0.698	0.564	5.97%
Kuwait Telecommunications	0.590	0.001	0.17%	2.65	13.57	5.09	589	6.5%	38.0%	0.11	0.18	20.1%	10.9%	1.189	0.418	1.36%
National Mobile Telecommunications	1.025	-0.020	-1.91%	0.97	13.30	3.35	514	11.4%	64.3%	0.00	0.00	7.2%	4.2%	1.280	0.615	1.18%
AAN Digital Services	0.016	0.000	0.00%	0.60	NM	0.00	14	0.0%	-2.4%	0.00	0.00	NM	NM	0.020	0.016	0.03%
Hayat Communications	0.059	-0.001	-1.50%	0.47	NM	0.00	5	-4.8%	-44.3%	0.00	0.00	-0.7%	-0.3%	0.124	0.050	0.01%
Telecom - 5 Companies							3,714			2.35	3.93					8.56%

Utilities	Price			Valuation Multiples			MKT Cap	Price Performance		Trading Indicators		ROE	ROA	52 Week (KD)		MKT Cap
	Close (KD)	Day Δ	Day % Δ	PBV(X)	PE(X)	DY%	Mn KD	MTD(%)	YTD (%)	Value (Mn KD)	(Mn Shrs)	(%)	(%)	High	Low	%
Shamal Az-Zour Al-Oula Power & Water	0.193	0.003	1.58%	2.17	14.78	9.47	212	-1.0%	-15.4%	0.12	0.61	19.1%	2.9%	0.247	0.188	0.49%
Total Utilities - 1 Companies							212			0.12	0.61					0.49%

Total Market 156 Companies				2.00	31.01	3.99	43,392			52.16	150.36					100%
-----------------------------------	--	--	--	-------------	--------------	-------------	---------------	--	--	--------------	---------------	--	--	--	--	-------------

End of Report

The information contained in this document is proprietary to NIC and is for use only by the persons to whom it is issued. This document is confidential and may not be distributed either in part or in whole without the express agreement of NIC. It is intended solely for the use of the individual or entity to whom it is addressed and others authorized to receive it.

Note : ROE and ROA is calculated based on LFY net profit & shareholders' equity and LFY Operating Profits & Total Assets

Sources : National Investments Company Research and Studies Departments, Boursa, Refinitiv.



شركة الاستثمار الوطنية
NATIONAL INVESTMENTS COMPANY

Sharq, Al Mutanabi Street, Khaleejia Tower | P.O. Box 25667, Safat 13117, Kuwait

T.: +965 2226 6666 | Fax: +965 2226 6793 | www.nic.com.kw